

STILReaderPro Software Installation for MS Windows Platform

Introduction

The *STILReaderPro* Software requires that the TDSDIR environmental variable be set correctly to point to the installation directory of the software – instructions are provided in the **Environment Variables Setup** section below. When updating the software installation to a new version of software, make sure the TDSDIR environmental variable is modified to reflect the updated installation location.

Also note that TDSDIR should be in your Windows PATH environmental variable – instructions are provided in the **Update the PATH variable** section below.

The executable *STILReaderPro.exe* can be copied to another location if desired – instructions are provided in the **Advanced setup** section below.

The section **STILReaderPro Usage** illustrates how to run the program and also shows the help page.

Download and Install Software

Please download and install the software using the instructions in the file *TSSI SW Windows Installation XXXX.pdf* where XXXX is the current year. The document also explains how to install and activate your license file.

Contact your TSSI representative or TSSI (hotline@tessi.com) if you do not have the *TSSI SW Windows Installation XXXX.pdf* file.

Environment Variables Setup

The PC will need a special environmental variable to point to the location of installation.

Note: Installations steps will probably need elevated Windows privileges - choose the *Run As Administrator* command from the shortcut menu for appropriate Windows functions. If you need assistance, contact your IT department.

After installation of software, setup the *TDSDIR* environmental to point to the *tds* directory in the installation version. To set the *TDSDIR* environmental, right-click on *ThisPC* icon on your Desktop, select Properties and then in the Windows Basic Information page, click on *Advanced system settings*. For Windows 10, you may need to scroll down to the *Related settings* section and click the *System info* link and in the System window that opens, click the *Advanced system settings* link in the left column.

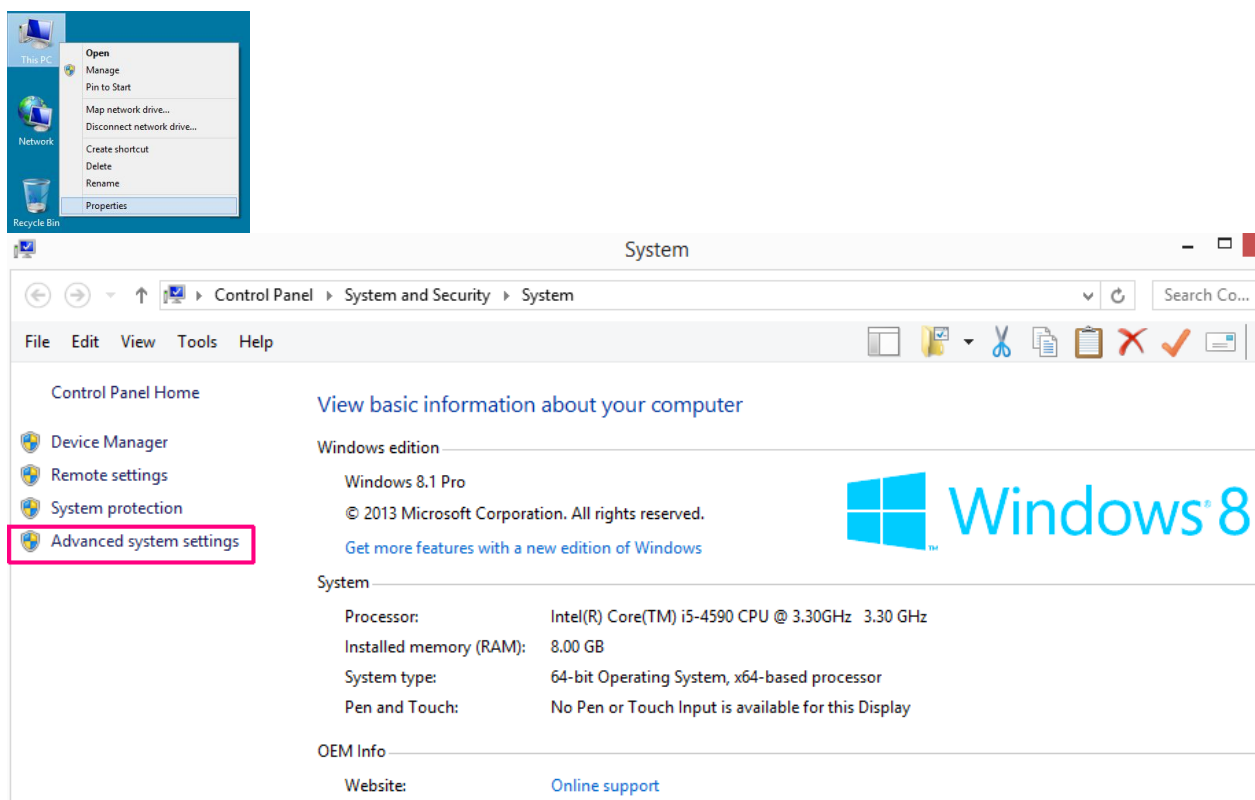


Figure 1: In the Windows Basic System Information Page, Select [Advanced system settings]

Click on *Environment Variables* button in the Windows *System Properties* popup:

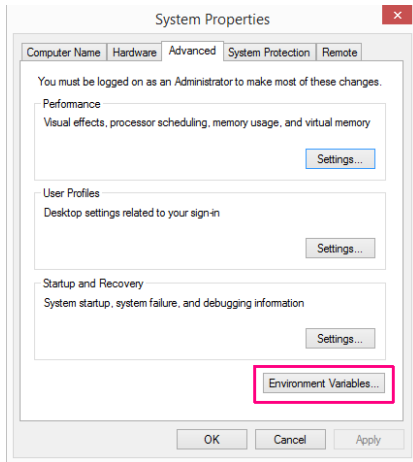


Figure 2: Windows Advanced System Properties Popup

Click on *New* button under *System variables* within the *Environmental Variables* popup:

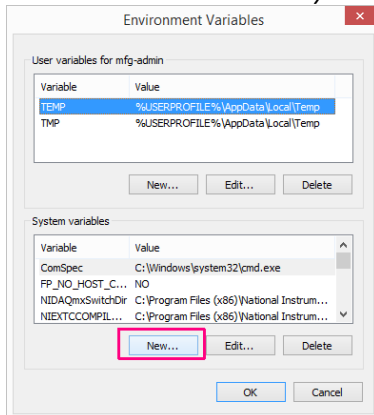


Figure 3: Windows Environmental Variables Popup

Enter *TDSDIR* for the *Variable name* and the path to the *tds* directory under *Variable value*. Click OK to close the Edit System Variable Popup.

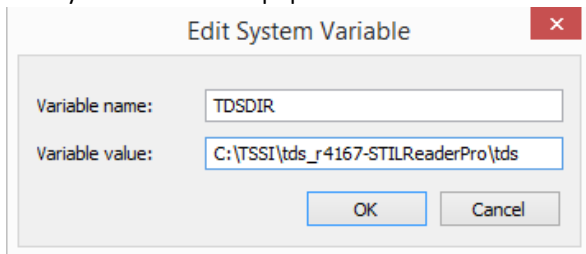


Figure 4: Create the *TDSDIR* Variable

Update the PATH variable

Locate the Path System Variable in the *Environmental Variables* Pop-up's *System variables* section.

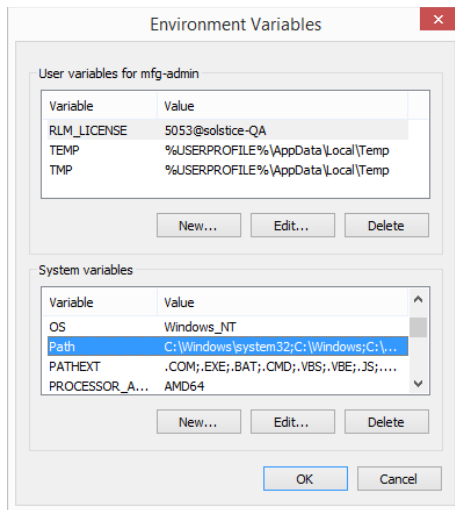


Figure 5: Locate %Path% in the System Variable section

Highlight *Path* and then click the *Edit...* button and then append the following text to the existing field:
 ;%TDSDIR%;%TDSDIR%\tools

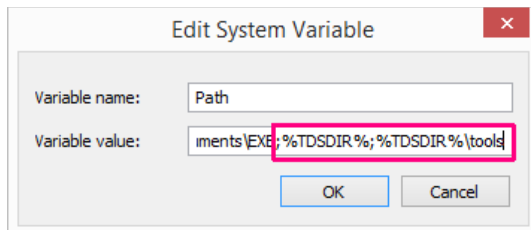


Figure 6: Update %Path% in the Edit System Variable popup

Click OK on all open Popups to close the popups.

It may be necessary to close all command windows or reboot your PC to reflect the updated settings.

Advanced setup

The STILReaderPro tool can be moved to an alternative location if convenient. If this is done, be sure to update the Path environmental variable by replacing %TDSDIR%\tools with the new file location.

STILReaderPro Usage

The STILReaderPro tool can be executed from a Command window on your Windows system.

Start a command window:

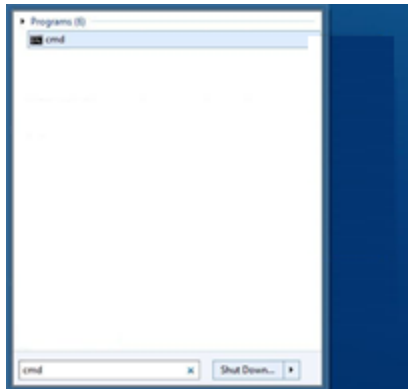


Figure 7: Start the Windows Command Window

In the command window, type the *STILReaderPro* command:

```

C:\Windows\system32\cmd.exe

C:\Users\User>STILReaderPro
Usage: STILReaderPro -stil <STIL_file> [options]
Error: STIL file must be specified on command line (-stil option).

C:\Users\User>STILReaderPro -help
Usage: STILReaderPro -stil <STIL_file> [options]
Options:
[-allpinname prefix] - Adds a prefix to the pin group name (*)
[-atpg tool_name] - Specifies ATPG tool (tetramax, fastscan, encounter)
[-basegrp] - Performs grouping according to the pin Groups in
the STIL file
[-compression] - Perform Repeat compression in pattern file (new)
[-convopt] - Replaces an event that exists in the STIL file with
a specified event (*)
[-deledge] - Optimises STIL timing for ATE
[-errorcheck] - Checks the data consistency of the STIL file
[-file opts_file] - Uses options specified in the specified file
[-folder directory] - Specifies name of folder/directory where files are
stored (same as -outdir)
[-grpname grp_prefix] - Adds a prefix to the pin group name (*)
[-help] - Displays options
[-lf] - Generates the pattern file including indents
[-log log_file] - Saves the conversion log to specified file
[-makepinmap] - Creates a pin map definition file (*)
[-mux] - Mux the input STIL at 2x
[-nolog] - Does not record the conversion log to a file
[-nw] - Does not output warning messages (*)
[-outdir directory] - Specifies name of folder/directory where files are
stored (same as -folder)
[-paf pin_file] - Specifies the TSSI Pin Assignment File.
Overrides -pinmap and -pingrp switches.
[-pat pattern_name] - Specifies name of pattern. Default is the basename
of the STIL file
[-pindel pindel_file] - Specifies name of file with list of pins to delete
[-pingrp pingrp_file] - Specifies name of pin group file
[-pinmap pinmap_file] - Specifies name of pin map file
[-progname prog_name] - Specifies base name for program files
[-pxrfilename pxr_file] - Specifies basename of pinmap, pingrp, pxr files (*)
[-pxr prefix] - Adds a prefix to the pattern cross reference file (*)
[-scan] - Generates the pattern file in scan pattern format
-stil STIL_file - STIL source file [REQUIRED]
[-tester hw_name] - Specifies hardware model name (*)
[-tmapfile] - Outputs a TS mapping file (*)
[-tsoptimize] - Optimize STIL timing for ATE usage
[-var] - Create variables based on STIL timing. If variables
are present within the STIL file, do not use switch.
[-ver] - Displays the version number
[-wfcmap] - Specify the WFCs of the STIL file (*)
[-wfcreport] - Reports when a WFC has been overwritten (*)

Key:
[] = Optional switch
* = Deprecated feature in this release

C:\Users\User>
    
```

Figure 8: STILReaderPro command and help display

Running TSSI Solstice GUI

The functionality of STILReaderPro is also available in the standard TSSI Solstice tools. To start, double-click on the wavemakerplus.exe icon located in %TSDIR%\tds and the wavemakerplus GUI should appear:

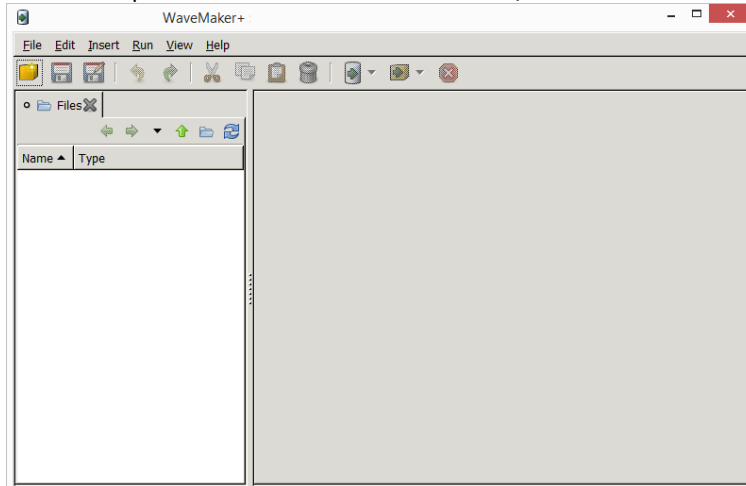


Figure 9: WaveMakerPlus GUI

Getting Help

Online help is available from the Help Menu within WaveMakerPlus:

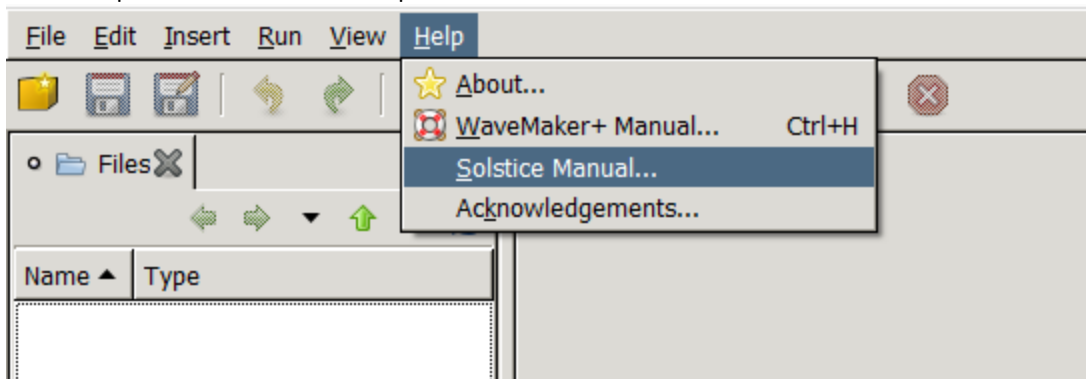


Figure 10: Accessing On-line Help

The Help Page should appear similar to below:

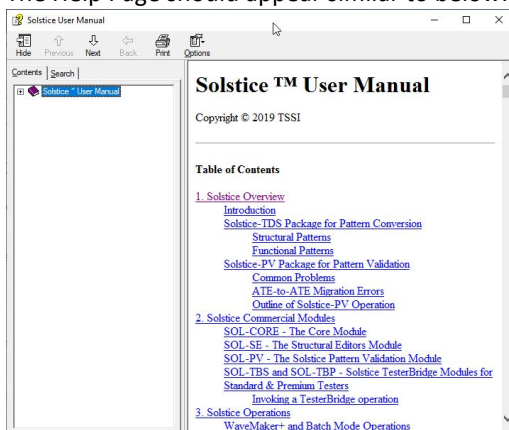


Figure 11 Solstice Help Starter Page on Windows platform

Microsoft Windows may block the compiled HTML content of the Windows Help. In this case, you will see blank content on the right-hand pane as shown below:

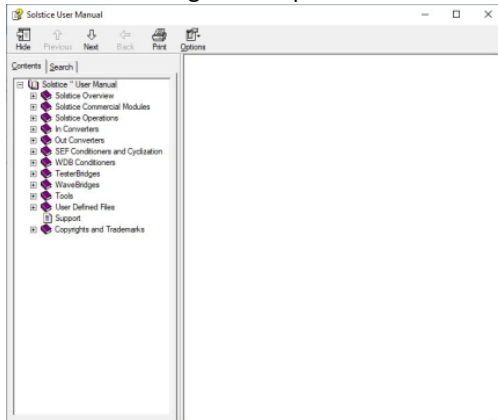


Figure 12 Solstice Help Page with blocked content

You can unblock content via the Properties of the compiled HTML files (.CHM). You may need elevated-privileges of a Windows administrator to make changes to the properties. In a Windows Explorer window, navigate to the "doc" directory with the TSSI Installation (%TSDSIR%) and locate the **two** CHM files:

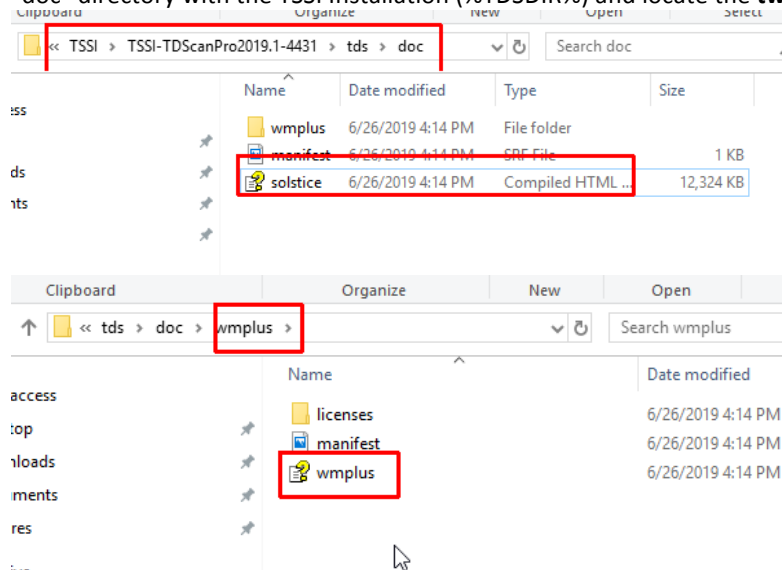


Figure 13 The two TSSI Help Files (.CHM)

To unblock the trusted CHM files: Right click your CHM file and select "Properties" on the popup menu. On the "General" tab, click the "Unblock" button. Then click "OK".

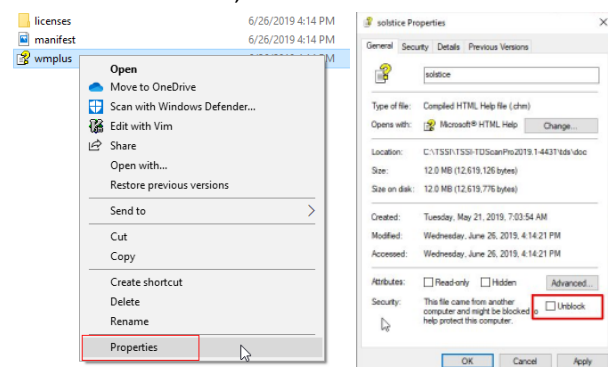


Figure 14 Enabling Content of .CHM Files

After enabling the content, restart the WaveMakerPlus and select Solstice Help from the menu. If the content is still blocked, please contact TSSI for assistance.

Getting Assistance

World Wide Web: <http://www.tessi.com>

For Technical Support:

E-mail hotline@tessi.com
Phone +1 503-764-2308